

## Agribox Gran Volume

Perforated walls and bottom



1076F, 1085F, 1176F and 1185F versions: save space when transporting and storing, 3 empty containers stack in the volume of 2.

Sturdy and elastic. Better space efficiency guarantees greater operational efficiency.

Art. code	External dim. - mm		Internal dim. - mm	Capacity - lt	Weight - *kg		
	height with feet	height with skids			4 feet	2 skids	3 skids
1063 F	1200x1100x630	650	1110x1010x475	560	37	40	43
1076 F	1200x1100x760	780	1110x1010x605	720	41	44	47
1085 F	1200x1100x850	870	1110x1010x695	830	44	47	50
1163 F	1200x1000x630	650	1120x920x475	520	33	36	39
1176 F	1200x1000x760	780	1120x920x605	680	37	40	43
1176 FA*	1200x1000x760	780	1120x920x605	680	37.5	40	43
1185 F	1200x1000x850	870	1120x920x695	760	40	43	46
1185 FA*	1200x1000x850	870	1120x920x695	760	40.5	43	46
1263 F	1200x1200x630	650	1110x1110x475	610	38.5	41.5	44.5
1276 F	1200x1200x760	780	1110x1110x605	780	43	46	49
1285 F	1200x1200x850	870	1110x1110x695	900	45.5	48.5	51.5

\* Dimensional tolerance  $\pm 7$  mm - Weight tolerance  $\pm 3\%$   
\* With flap

Accessories available: wheels, lid and skids



THE LIGHTWEIGHT PLASTIC  
GOOD FOR THE ENVIRONMENT



Made of PE-HD

100%

100% Recyclable



Endless Life Cycle

## Agribox Gran Volume "1500 Series"

Perforated walls and bottom



Higher capacity, greater sturdiness, better airflow, faster unloading: the maximum advantages for harvesting, transportation, ambient storage and cold storage for industrial agriculture.

Art. code	External dim. - mm		Internal dim. - mm	Capacity - lt	Weight - *kg
	height with feet	height with skids			
1558 F	1125x1125x580	780	1055x1055x435	500	28.5
1561 F	1125x1125x610	810	1055x1055x465	524	29.4
1563 F	1125x1125x630	840	1055x1055x485	550	29.9
1577 F	1125x1125x770	970	1055x1055x615	715	34.5

**Airkit** Hygienic, functional, helpful, smart. Patented.

Art. code	External dim. - mm	Internal dim. - mm	Capacity - lt	Weight - *kg
Airkit	360x360x310	-	-	0.7

\* Dimensional tolerance  $\pm 7$  mm - Weight tolerance  $\pm 3\%$

Accessories available: wheels, space for barcode



## Enobox

Perforated walls with closed bottom



Light and easy to handle, streamlines labour in the vineyard and reduces the risk of oxidation.

Art. code	External dim. - mm		Internal dim. - mm	Capacity - lt	Weight - *kg		
	height with feet	height with skids			4 feet	2 skids	3 skids
1089 P	1200x800x760	780	1110x710x600	470	30.5	34	37
1090 P	1200x800x580	600	1110x710x420	330	26.5	31	34
1091 P	1200x1000x760	780	1120x910x605	610	36.5	40	43
1092 P	1200x1000x580	600	1110x910x425	430	31	34	37
1093 P	1200x1100x760	780	1110x1010x605	680	36	39	42
1094 P	1200x1100x580	600	1110x1010x425	480	30	33	36
1095 P	1130x1130x760	780	1040x1040x605	660	35.5	38.5	-
1096 P	1130x1130x580	600	1040x1040x425	460	29	32	-
1097 P	1130x1130x630	650	1040x1040x475	510	30.5	33.5	-

\* Dimensional tolerance  $\pm 7$  mm - Weight tolerance  $\pm 3\%$

Accessories available: wheels, lid and skids



1091P and 1093P versions: save space when transporting and storing, 3 empty containers stack in the volume of 2.

## Containers Division

Product Summary Catalogue



INDUSTRIA

MATERIE

PLASTICHE

Capp-Plast s.r.l.  
Containers Division

Sales Italy

Piazzale Arduino, 5 - 20149 - MILAN - IT  
tel: +39 02 481 514 1  
fax: +39 02 480 122 26  
e-mail: vendite.italia@capp-plast.com

Export Sales and Plant

Via P. Nenni, 1 - 50013 - CAPALLE (FI) - IT  
tel: +39 055 873 1201  
fax: +39 055 87 31 200  
e-mail: exports.fi@capp-plast.com

Since 1960

Flexible packaging - Bottles - Containers and pallets

www.capp-plast.com

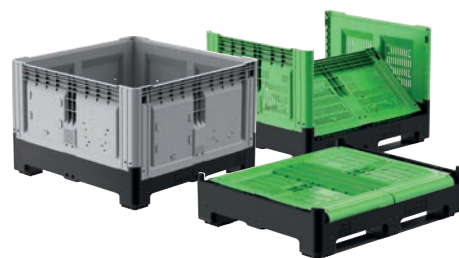


UNI EN ISO 9001:2000



# Smartbox

Closed or perforated



The intelligent, reliable and economical answer to logistics and space problems in the industrial and agro-food sectors. Chosen by NATO.

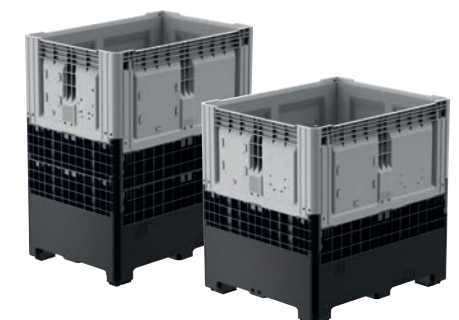
Art. code	External dim. - mm		Internal dim. - mm		Capacity - lt		Weight - *kg				
	height with feet	height with skids			4 feet	2 skids	3 skids	P	C	P	C
<b>1388 F/C</b>	1200x800x800	805	1120x720x660		565	37.5	38	40	41	43	44
<b>1389 F/C</b>	1200x800x973	978	1120x720x833		695	45	46	47.5	48.5	51	52
<b>1308 F/C</b>	1200x1000x800	805	1120x920x660		720	43	44	46	47	49.5	50.5
<b>1309 F/C</b>	1200x1000x973	978	1120x920x833		905	51	52	55	56	58.5	59.5
<b>1318 F</b>	1200x1100x800	805	1120x1120x660		805	44.5	-	48.5	-	52	-
<b>1328 F/C</b>	1200x1200x800	805	1120x1120x660		880	47	48	50.5	52	54	55
<b>1329 F/C</b>	1200x1200x973	978	1120x1120x833		1080	57	58	59.5	61.5	63	64.5

\* Dimensional tolerance  $\pm$  7 mm - Weight tolerance  $\pm$  3%  
Accessories available: wheels, lid and skids

F = perforated  
C = close



# Extender for Smartbox



The Smartbox foldable wall container features the innovative **Extender**, an HDPE ring that easily increases its volume, making it particularly suitable for meeting the need for greater capacity.

## Smartbox with 1 Extender

Mod.	External dim. - mm		Internal dim. - mm		Capacity - lt		Weight - *kg		Stackability up to (kg)**
	height with 3 skids								
<b>120812</b>	800x1200x1200 (h)		720x1120x1050 (h)		870		61		4000
<b>121012</b>	1000x1200x1200 (h)		920x1120x1050 (h)		1010		69		4000
<b>121212</b>	1200x1200x1200 (h)		1120x1120x1050 (h)		1360		76		4000

## Smartbox with 2 Extender

<b>120814</b>	800x1200x1425 (h)		720x1120x1280 (h)		1040		71		4000
<b>121014</b>	1000x1200x1425 (h)		920x1120x1280 (h)		1320		79		4000
<b>121214</b>	1200x1200x1425 (h)		1120x1120x1280 (h)		1610		86		4000

\* Dimensional tolerance  $\pm$  7 mm - Weight tolerance  $\pm$  3%

\*\* Tests performed in a laboratory at a temperature of 23°C, on models with 3 skids.

(h) Model load with skids. For the model load with 4 feet, ask for the technical data sheet.



# Industrial box

Closed walls and bottom



Suitable for containing also liquids, from production departments to transport containers, it is used in a wide range of industrial applications.

Art. code	External dim. - mm		Internal dim. - mm		Capacity - lt		Weight - *kg		
	height with feet	height with skids			4 feet	2 skids	3 skids		
<b>1089 C</b>	1200x800x760	780	1110x710x600		470	31.5	34.5	37.5	
<b>1089 CA*</b>	1200x800x760	780	1110x710x600		470	32	35	38	
<b>1090 C</b>	1200x800x580	600	1110x710x420		330	27	30	33	
<b>1091 C</b>	1200x1000x760	780	1120x910x605		610	38.5	42	44.5	
<b>191 C</b>	1200x1000x760	780	1120x910x605		610	35.5	38.5	41.5	
<b>1091 CA*</b>	1200x1000x760	780	1120x910x605		610	39	42	44.5	
<b>1092 C</b>	1200x1000x580	600	1110x910x425		430	32.5	35.5	38.5	
<b>1093 C</b>	1200x1100x760	780	1110x1010x605		680	38	41	44	
<b>1094 C</b>	1200x1100x580	600	1110x1010x425		480	31	34	37	
<b>1095 C</b>	1130x1130x760	780	1040x1040x605		660	37	40	-	
<b>1096 C</b>	1130x1130x580	600	1040x1040x425		460	31.5	33	-	
<b>1099 C</b>	1200x1100x400	-	1110x1000x244		260	22	-	-	

\* Dimensional tolerance  $\pm$  7 mm - Weight tolerance  $\pm$  3%

• With Flap

Accessories available: wheels, lid and skids



# Industrial box 1691

Closed or perforated



Industrial box is used in a wide range of industrial applications. Made in Holland, the sturdy but lighter **1691** is the economical solution that makes handling easier

Art. code	External dim. - mm		Internal dim. - mm		Capacity - lt		Weight - *kg		
	height with feet				4 feet	2 skids	3 skids		
<b>1691 C</b>	1200x1000x765		1120x920x636		615	33.5	36.5	39	
<b>1691 F</b>	1200x1000x765		1120x920x636		470	33	35.5	38	

\* Dimensional tolerance  $\pm$  7 mm - Weight tolerance  $\pm$  2%  
Skids on the long side and a wide range of accessories are available with version A2 and A3

F = perforated  
C = close



# Industrial box UN

Closed walls and bottom



This Intermediate Bulk Container (IBC) is suitable for the transport of solid substances and is approved by the Belgian Packaging Institute (Ibe-BVI) with specific approval codes and has passed a drop test from a height of 120cm at -30°C. Special seal made of double density EPDM.

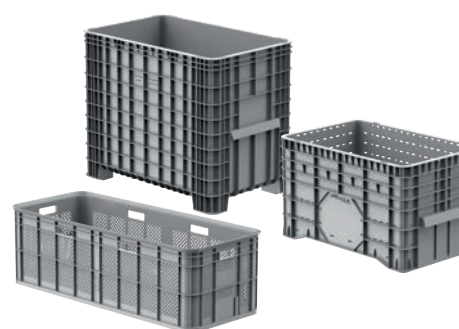
These containers are equipped with three skids and a sealed lid secured by two straps tied tightly to the sides by a user-friendly system developed by Capp Plast.

Art. code	External dim. - mm		Internal dim. - mm		Capacity - lt		Weight - *kg		
	height with feet				4 feet	2 skids	3 skids		
<b>1089 C</b>	1200x700x780		1110x710x600		470	-	-	40.5	
<b>1091 C</b>	1200x1000x780		1110x910x605		610	-	-	44.5	

\* Dimensional tolerance  $\pm$  7 mm - Weight tolerance  $\pm$  3%



# 1425 and 1400A



1400A: save space when transporting and storing, 3 empty containers stack in the volume of 2.

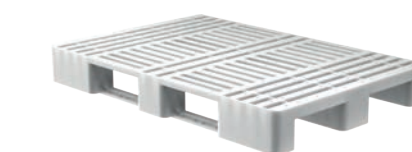
Versatile, easy to handle, light and non-deformable, they are a valuable asset for small and medium size companies.

Art. code	External dim. - mm		Internal dim. - mm		Capacity - lt		Weight - *kg		
	height with feet	height with skids			4 feet	2 skids	3 skids		
<b>1425 A</b>	1200x795x800		1115x740x650		550	21.5	23.5		
<b>1425 B</b>	1040x640x670		930x590x515		285	13.7	-		
<b>1425 C</b>	1030x600x840		950x550x725		400	20.5	-		
<b>1425 F</b>	1040x640x550		930x590x400		220	11.5	-		
<b>1400 A</b>	1020x640x580		930x590x510		300	10.5	-		
<b>1425 I</b>	1190x490x370		1145x445x350		180	5.8	-		
<b>1425 L</b>	1060x395x295		1020x355x280		100	4	-		

\* Dimensional tolerance  $\pm$  10 mm - Weight tolerance  $\pm$  2%



# Pallets



Hygienic, sturdy, light and easy to handle, but most importantly economical.

Art. code	External dim. - mm	Capacity in motion - kg	Static load - kg	Rack load capacity - *kg	Weight - **kg
<b>1429 B</b>	1200x1000x145	1200	4500	300	15.5
<b>1429 C</b>	1200x1100x145	1200	4500	300	16.5
<b>1429 D</b>	1300x1100x145	1200	4500	300	17
<b>1429 F</b>	1010x920x145	1000	4000	300	12

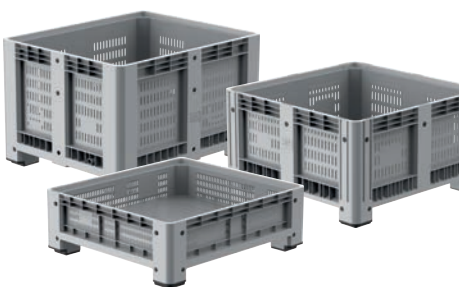
\* Only on two supports without section bar. Contact Capp-Plast for further information.

\*\* Dimensional tolerances:  $\pm$  10 mm - Weight tolerance:  $\pm$  2%



# Agribox

Perforated walls and bottom



1091 F and 1093 F versions: save space when transporting and storing, 3 empty containers stack in the volume of 2.

Light and sturdy, it is suitable for use in any phase of mechanized agriculture: harvesting, transportation, ambient storage and cold storage.

Art. code	External dim. - mm		Internal dim. - mm		Capacity - lt		Weight - *kg		
	height with feet	height with skids			4 feet	2 skids	3 skids		
<b>1089 F</b>	1200x800x760	780	1110x710x600		470	30	33	36	
<b>1090 F</b>	1200x800x580	600	1110x710x420		330	26	29	32	
<b>1091 F</b>	1200x1000x760	780	1120x910x605		610	36	39	42	
<b>191 F</b>	1200x1000x760	780	1120x910x605		610	33.5	36.5	39.5	
<b>1092 F</b>	1200x1000x580	600	1110x910x425		430	31	34	37	
<b>1093 F</b>	1200x1100x760	780	1110x1010x605		680	35.5	38.5	41	
<b>1094 F</b>	1200x1100x580	600	1110x1010x425		480	30	33	36	
<b>1095 F</b>	1130x1130x760	780	1040x1040x605		660	35	38	-	
<b>1096 F</b>	1130x1130x580	600	1040x1040x425		460	28	31	-	
<b>1097 F</b>	1130x1130x630	650	1040x1040x475		510	29.5	32.5	-	
<b>1099 F</b>	1200x1100x400	-	1110x1000x244		260	22	-	-	

\* Dimensional tolerance  $\pm$  7 mm - Weight tolerance  $\pm$  3%

Accessories available: wheels, lid and skids



All containers are made of non-toxic material food industry use

Please consult our website [www.capp-plast.com](http://www.capp-plast.com) for instructions on the safe use and handling of Capp Plast containers. Adhering to these rules gives Capp Plast containers an effective, safe use and consequently greater durability. The company reserves the right to change or modify the characteristics of the products presented in this publication at any time.



1091C and 1093C versions: save space when transporting and storing, 3 empty containers stack in the volume of 2.

\* Dimensional tolerance  $\pm$  7 mm - Weight tolerance  $\pm$  3%

• With Flap

Accessories available: wheels, lid and skids



1076C, 1176C, 1085C and 1185C versions: save space when transporting and storing, 3 empty containers stack in the volume of 2.

\* Dimensional tolerance  $\pm$  7 mm - Weight tolerance  $\pm$  3%

• With flap

Accessories available: wheels, lid and skids

